

Discover the masterpieces of the Royal Museum of the Armed Forces and of Military History

For children from
6 to 8 years



Royal Museum of the
Armed Forces and of Military History



brussels
museums.be



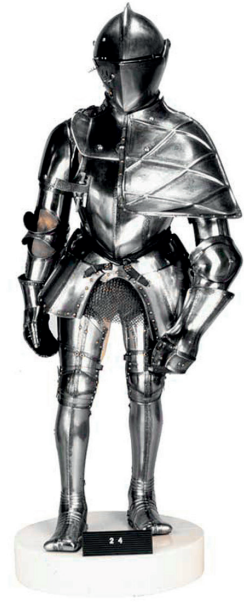
Philip II's tournament armour

Philip II wore this armour during tournaments.

In order to make the opponent fall off his horse, Philip used a lance such as the one on display.

How many of them do you see?

ANSWER:



Serpent

This strange musical instrument is named after an animal. Why do you think it is called a serpent?



- a. Because of the sound it produces, recalling the hissing of a snake.
- b. Because of its coiled shape, which makes it difficult to handle.
- c. Because of its aspect. The instrument is made of wood covered in snake skin to make it prettier.

Painting Mrs. Abts

In this painting a Brussels seamstress, Mrs Abts, sews the first ever Belgian flag.

The flag in the painting strongly resembles the Belgian flag as we know it today (there are some to be found in this gallery).

However, there is one major difference. What is it?

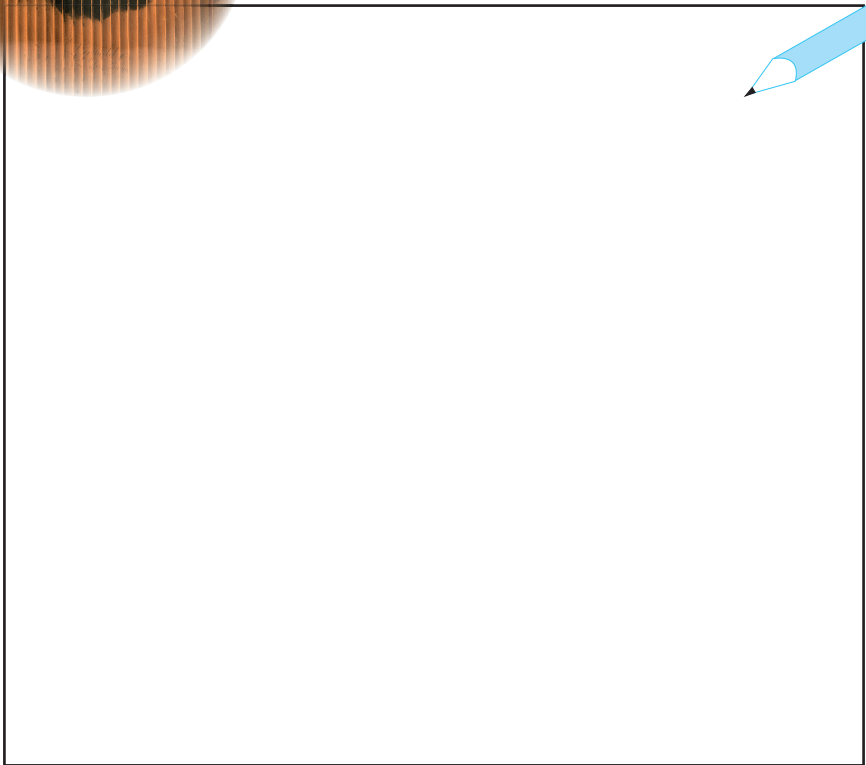
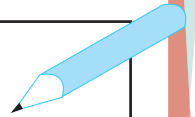
- a. The orientation of the colours
- b. The sequence of the colours
- c. The number of colours



Double portrait of Leopold I and Louise-Marie

This object is a souvenir from Leopold I and Louise-Marie's wedding. On one side you can see the young queen and on the other her husband, the first king of the Belgians.

Take your inspiration from other representations of the royal couple you'll find in the showcases. Draw the king and the queen. Pay attention to their clothing and hairdos, as well as to the fashion of the era!





Sutler

This is a sutler. Sutlers supply soldiers with food and drink. Do you know which three accessories in the list below belong to the sutler?

- a. A hat
- b. A sword
- c. A barrel
- d. A backpack
- e. A white apron



Fake tree

This is the top part of a fake tree from the First World War. Why do you think this tree is hollow?

Beware: only one answer is correct!

- a. The soldiers hid in the tree in order to spy on the enemy without being noticed.
- b. The soldiers hid their food in the tree, in order to keep it safe from rats.
- c. The soldiers hid bombs in the tree, which exploded when the enemy came in its vicinity.



Stir drums WW I

These drums belonged to British and Canadian battalions who participated in the First World War.

Several animals are depicted on these drums.

Find the two animals that are NOT represented on the drums.

- | | |
|------------|-------------|
| a. dragon | f. beaver |
| b. lion | g. tiger |
| c. lizard | h. elephant |
| d. unicorn | i. deer |
| e. beaver | h. sheep |



Triplane Battaille

This triplane is one of the oldest airplanes in the hall. Can you indicate which material each part listed below is made of?

- | | |
|----------------|----------|
| The engine ● | ● wood |
| The fuselage ● | ● rubber |
| The tires ● | ● canvas |
| The wings ● | ● metal |



Schreck water plane

This is a water plane. Observe it closely.

Tick all the elements needed to make the aircraft land on water.

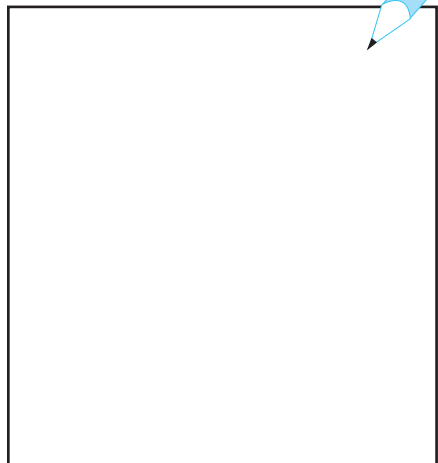
- a. The water plane carries the number 5.
- b. The engine is in an elevated position.
- c. Floaters have been added to the wingtips.
- d. The water plane is brown.
- e. The water plane has the shape of the hull of a boat.



Caravelle

The large passenger aircraft above is a Caravelle from former Belgian airline Sabena.

Look for the Sabena logo and draw it.



1. 5
2. b.
3. a.
4. /
5. a, c. and e.
6. a.
7. c. and h.
8. the engine = metal ; the fuselage = wood ; the tires = rubber ; de wings = canvas.
9. b, c. and e.
10. /

Colophon

Layout : Floriane Belleflamme
 © Brussels Museums – 2016

1 website,
100 museums



Jeux-parcours et carnets ludiques
dans les musées Bruxellois

Zoektochten en spelboekjes in
de Brusselse musea

Treasure hunts and other activities for
children in the Brussels' museums



brussels
museums.be

www.museesdebruxelles.be
www.museavanbrussel.be
www.brusselmuseums.be