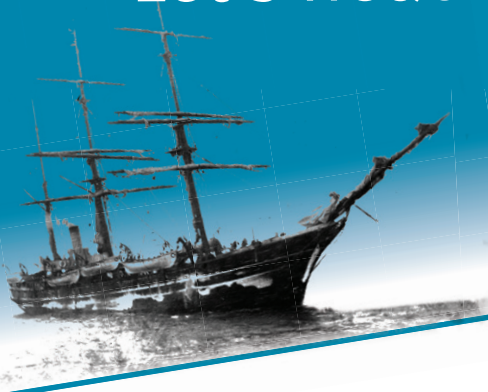


# ANTARCTICA

## Let's head out to the white continent!



*For the last 120 years Defence has supported the missions in Antarctica.*

*Follow in the wake of the Belgica, discover the King Baudouin Base and round off with a visit to the Princess Elisabeth Station.*



*Have a nice trip!*

Draw the Belgica and find your inspiration in the scale-model. Write the ship's departure and return dates on the dotted lines.

Departure:

Return:

The Belgica expedition is remarkable. It is indeed the first time that ...

(tick the 3 correct answers):

- Belgians go to Antarctica
- women visit Antarctica
- a ship hibernates in Antarctica
- Polish, Norwegian, American, Romanian and Belgian scientists research Antarctica together

What was the name of the Belgica's captain?

Hint: his jacket is displayed in the showcase opposite the educational module.

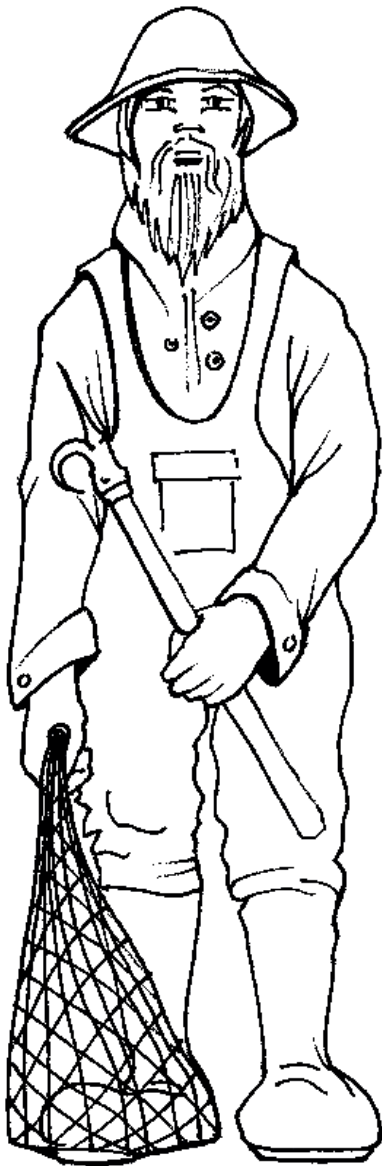
.....



*Who goes to Antarctica and why?*

With this module the people travelling to Antarctica will have no more secrets for you.

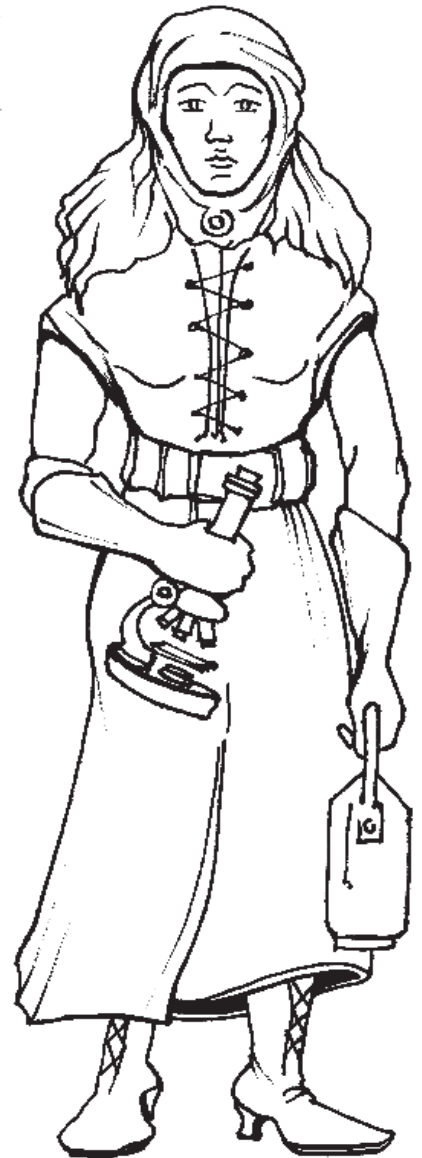
Assemble the silhouettes on the module and write the name of the professions on the dotted lines under the drawings. You can colour them at home!



.....



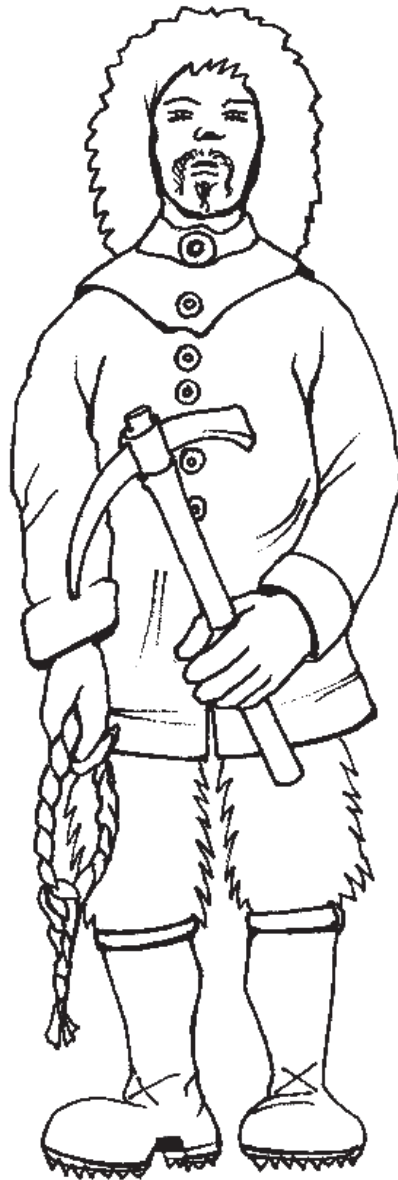
.....



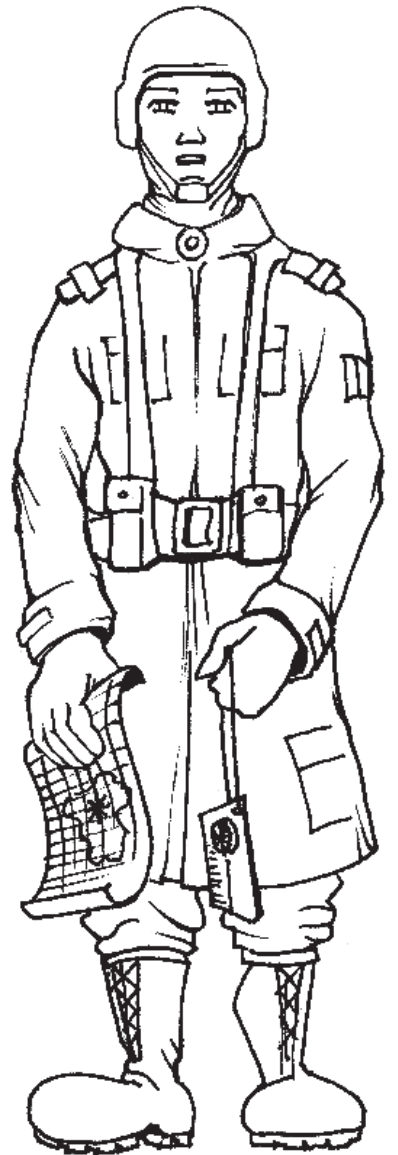
.....



.....



.....



.....

By connecting the dots you'll discover a drawing also present on an object display in the showcase. Can you find it?



The object is also in the picture of Captain de Gerlache's cabin used as a backdrop for the showcase!

“King Baudouin Base” area

The large diorama represents an expedition about to leave the King Baudouin Base. Can you find the 7 differences that slipped into the picture? Tick them.





On the eve of departure two famous comic book characters wished Gaston de Gerlache all the best. Who were they?  
..... and .....

The showcases contain objects having belonged to military men present in Antarctica.  
Link each item to its proprietor.



G. Lecointe

Gaston de Gerlache

F. Bastin

Ph. Herman

Adrien de Gerlache

“Princess Elisabeth Station” area

Antarctica features many Belgian names. Play with the module and find the correct answers to the questions (in French). By placing them in the grids, you’ll find the name of the missions Defence participated in in Antarctica.



1							
---	--	--	--	--	--	--	--

--	--	--	--	--	--	--	--	--	--	--	--



							3
--	--	--	--	--	--	--	---



A

		2			
--	--	---	--	--	--

Answer:



B

--	--	--	--	--

-	-	-	-	-	-
1	2	3	4	5	6



						5
--	--	--	--	--	--	---



--	--	--	--	--	--	--	--	--	--	--	--

										6
--	--	--	--	--	--	--	--	--	--	---



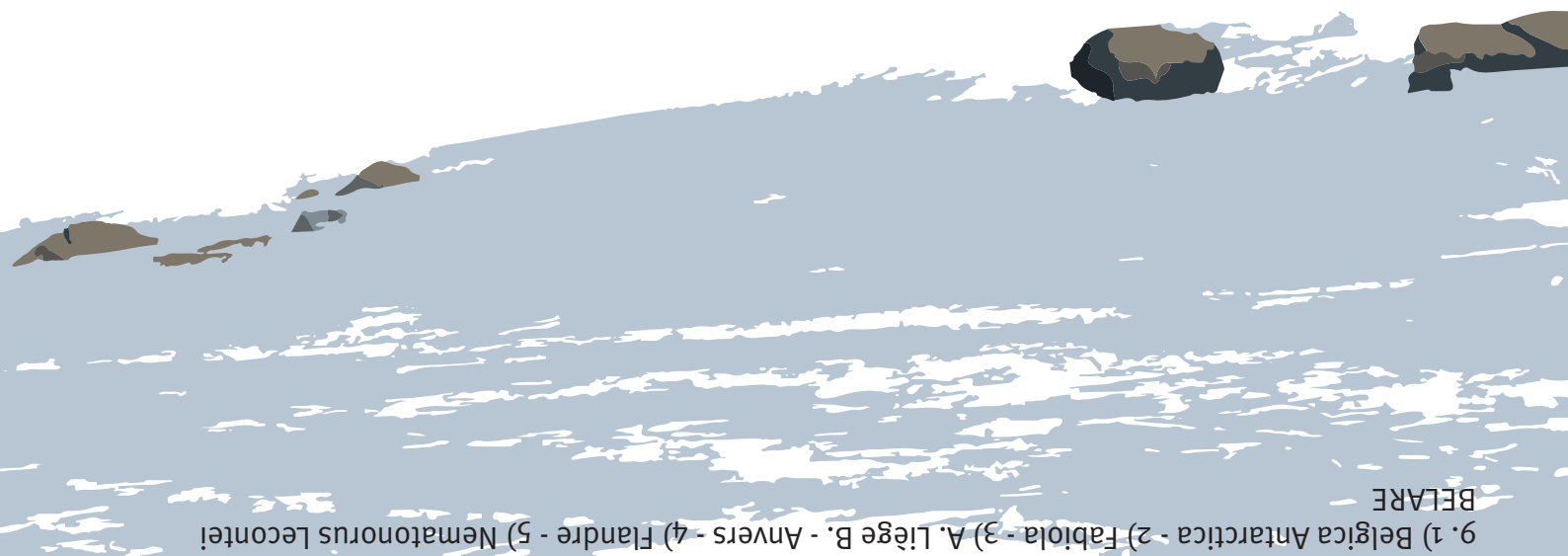
						4			
--	--	--	--	--	--	---	--	--	--

What do Belgian military do at the Princess Elisabeth Station? Find the jobs they did during the BELARE mission in the grid:

- G U I D E
- D O C T O R
- C O O K
- M E C H A N I C
- E L E C T R I C I A N
- B U I L D E R
- P L U M B E R
- C R A N E - W O R K E R
- E S C O R T

C	O	O	K	W	J	D	I	P	L	U	M	B	E	R	E
P	Z	C	N	I	O	O	N	U	U	P	J	O	T	K	A
I	B	X	A	P	N	C	I	H	M	D	Y	X	T	Q	J
T	X	Y	M	E	H	T	F	Z	X	V	K	E	O	U	V
X	S	P	N	I	M	O	B	K	J	C	K	B	A	H	B
L	B	K	A	Y	E	R	O	Y	H	R	A	U	E	H	Y
Z	F	Q	Q	G	C	M	E	C	H	A	N	I	C	U	E
N	A	E	S	C	O	R	T	G	O	N	A	L	C	U	F
E	E	L	P	M	K	E	Y	U	Q	E	U	D	J	G	F
X	J	Y	L	E	K	Z	D	E	I	-	U	E	H	E	H
E	V	E	E	Q	N	A	C	O	C	W	E	R	U	Z	S
O	O	L	A	I	A	V	A	V	I	O	N	B	K	H	K
G	J	N	L	I	E	L	E	C	T	R	I	C	I	A	N
Z	J	X	Y	E	B	M	E	V	F	K	E	I	C	V	B
G	U	I	D	E	F	A	N	Y	N	E	A	A	E	A	Y
R	D	C	W	O	W	E	N	W	D	R	O	R	Y	E	A

Watch the film about the Princess Elisabeth Station. Now you know all about its construction you can draw it. It stands on an icy tor (for stability the station was built on rock, the nunatak Utsteinen).



Answers:

1. Departure on 16/08/1897 – Return in Antwerp on 05/11/1899
2. Belgians go to Antarctica. A ship hibernates in Antarctica. Polish, Norwegian, American, Romanian and Belgian scientists research Antarctica together.
3. The Belgica's captain was Adrien de Gerlache.
4. Fisherman – Tourist – Scientist – Adventurer – Explorer – Military staff
5. The captain's bedspread on the Belgica
6. See diorama
7. Tintin and Captain Haddock
8. Cap = Gaston de Gerlache / Gloves = F. Bastin / Binoculars = G. Lecointe / Book cover = Adrien de Gerlache / Glasses = Ph. Herman
9. 1) Belgica Antarctica - 2) Fabiola - 3) A. Liège B. - Anvers - 4) Flandre - 5) Nematonorus Leconte!

BEIARE

